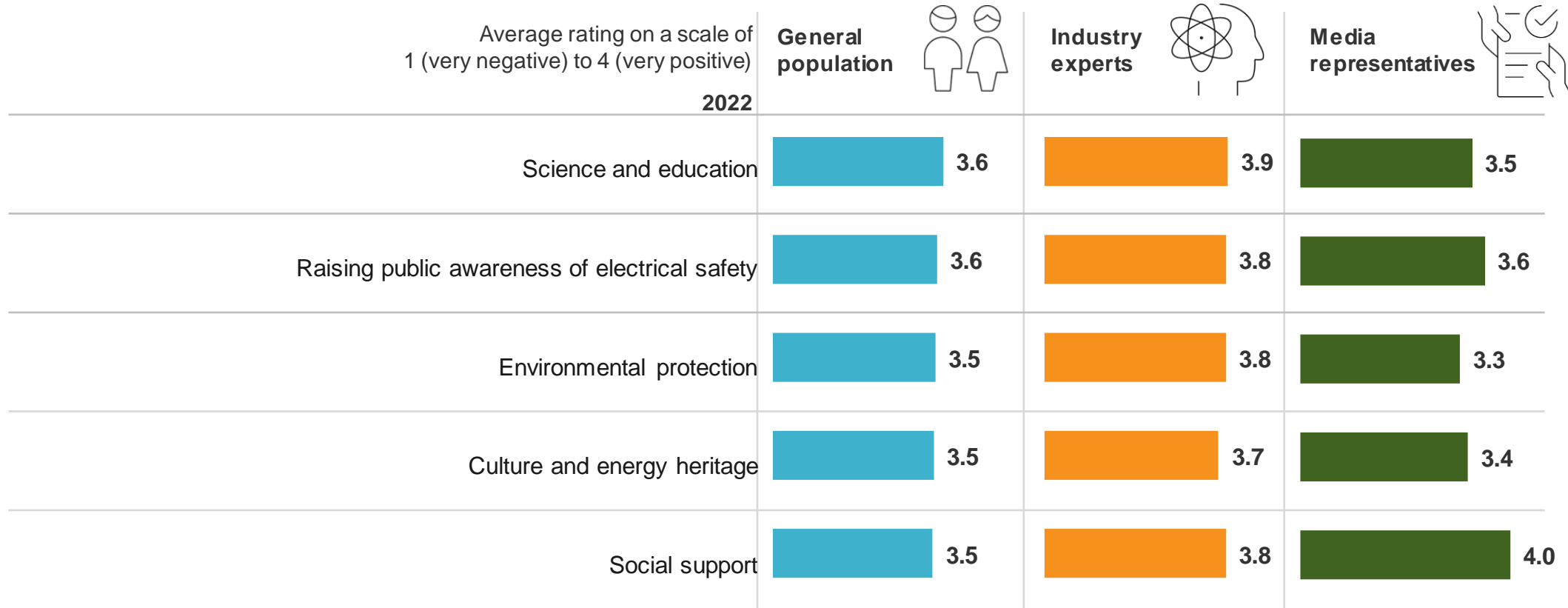


# Assessment of Latvenergo CSR activities

Overall, how do you assess the activities of each corporate social responsibility direction of Latvenergo Group that you are aware of? For each of them, would you say that you consider it "very positive", "rather positive", "rather negative" or "very negative"?



Sample: Respondents who are aware of and have formed an impression of a specific CSR activity of Latvenergo and have given a specific assessment