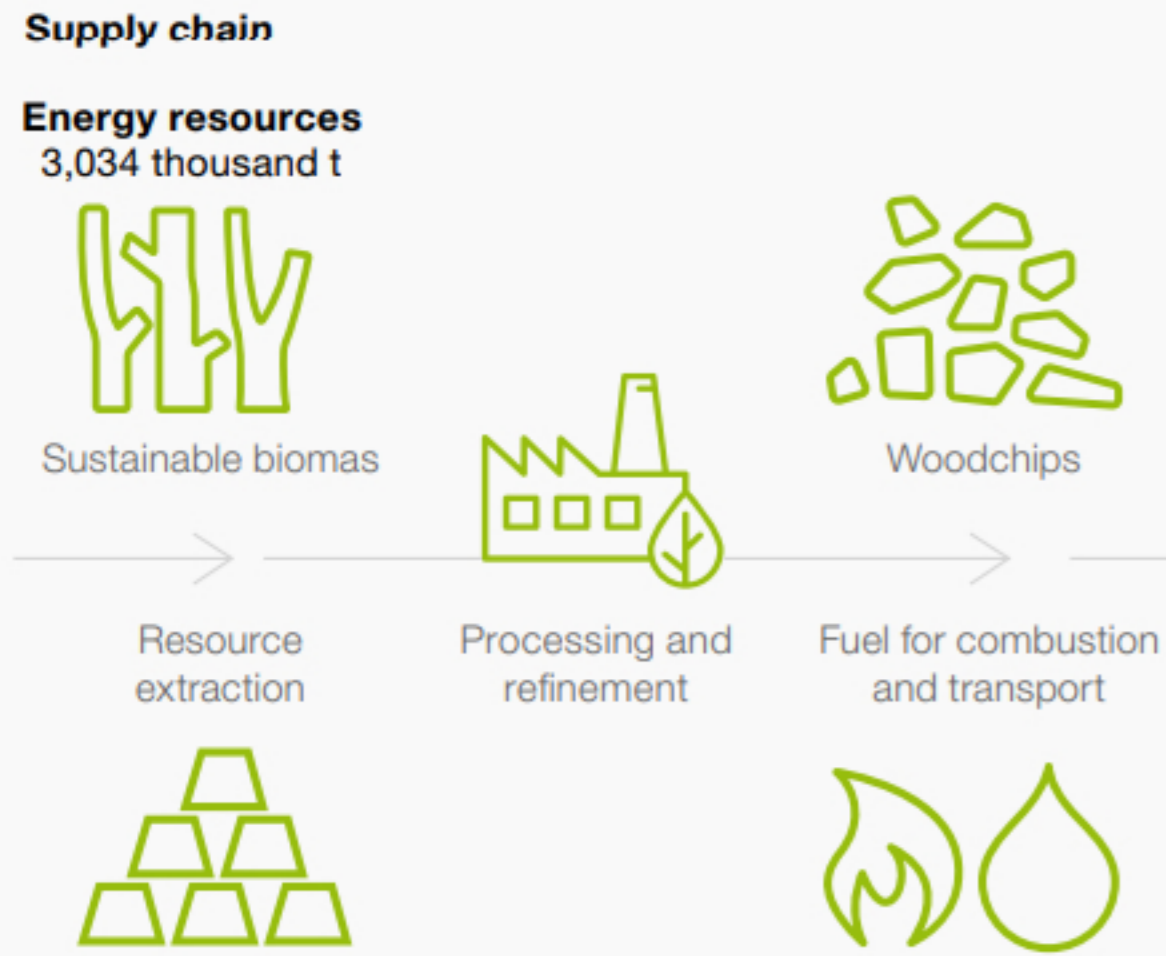


Latvenergo Group's GHG emissions by scope

Latvenergo Group's activities

SCOPE 3 EMISSIONS 3,173 thousand t



SCOPE 1 EMISSIONS 780 thousand t

Construction, reconstruction and maintenance



Electricity and thermal energy generation



WPPs
0 t

Solar parks
0 t



Daugava HPPs, Aiviekste HPP
0.2 t

Sadales tīkls AS activities
0.5 thousand t



Latvenergo AS CHPPs
765 thousand t



Liepaja plants
7.4 thousand t



Equipment and components

SCOPE 2 EMISSIONS 114 thousand t

Electricity distribution

Administrative activities

Electricity distribution losses
106 thousand t



Heating
0.5 thousand t



Electricity
7.5 thousand t



Company cars and machinery
with internal combustion engines
7.5 thousand t



with electric engines
0.016 thousand t

SCOPE 3 EMISSIONS 240 thousand t

Trade



Natural gas trade
236 thousand t



EV charging
0 t



Business travel
0.2 thousand t



Electricity trade



Solar panels and heating solutions



Goods and services



Employee commute
3.3 thousand t



Waste
0.5 thousand t